

# THE HOOSIER KERNEL

Publication of the

## INDIANA NUT & FRUIT GROWERS ASSOCIATION *INDIANA NUT GROWERS ASSOCIATION*

—————Wiley Green, Editor—————  
—————, co-Editor—————

Volume 64, No. 2

MAY 2017

### Grafting Meeting Deeter's Orchard, Kewanna, IN

The times will at 11:30 am. Lunch - 12:30; Business meeting 1:00

Grafting Demo 1:30 (and beyond)- Auction 2:45 - 3:30.

Bring your knives in case Claude Diehle provides sharpening services again. We hope to continue field grafting a few dozen of Bills trees throughout the afternoon until 5:00 pm.

<b>Articles</b>	<b>Page</b>	<b>Articles</b>	<b>Page</b>
President's Page.....	3	Chromosomes.....	10
Minutes.....	4	Persian Walnut Research.....	11
2016 Nut Evaluation.....	5	Chestnut Gall Wasp.....	13
Mari's Page.....	6	Gene Muriel Wild.....	16
Sweet Cherries, 100 years old.....	7	Officers & Experts.....	17
Fragrant Pears.....	8	Board Members .....	18
Repository Committee .....	10	Membership Form.....	19

INFGA's mission is to promote growing nut and fruit trees in Indiana for individuals, families, and various small-scale producers through educational meetings and field days that focus on nut and fruit tree culture and we promote the development of good nut and fruit cultivars for Indiana. For more information visit us at [www.nutgrowers.org](http://www.nutgrowers.org)

# Grafting Meeting

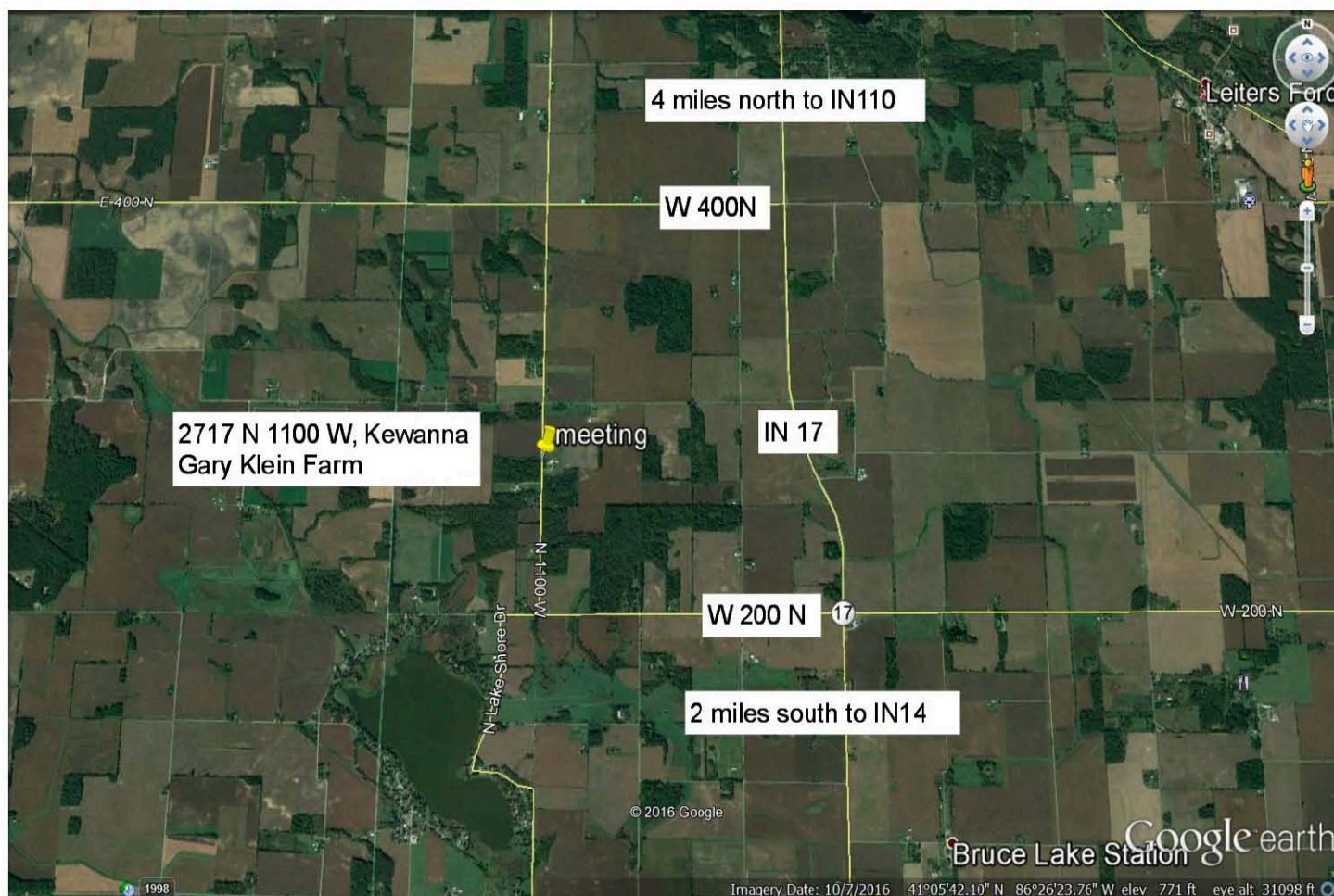
The INFGA spring grafting meeting will be held in Fulton County, Indiana on May 21<sup>st</sup>. Our host will be Bill Deeter. Our group will be having the meeting across the road on the Gary Klein farm. Parking, shelter, electrical power and amenities will be provided at the farm. We will then proceed to the 20-acre property located across the road for field grafting where you may observe or try your hand at grafting the rootstock provided. There is plenty of black walnut, persimmon, paw paw, pecan and some hickory available. In addition, potted Chinese chestnut and a few black walnuts will be available.

We will also walk part of the 15-acre forest located here if you wish. It is a mixed age forest with many large, fine hardwoods and vigorous young trees including many native nut trees. Woodland wild flowers and wildlife are also very plentiful and evident.

This forest also has a large number of paw paw of all sizes and for those who would like to see a “paw paw patch” you will not be disappointed.

The Gary Klein farm is located at: 2717 north 1100 west, Kewanna, Indiana 46939. INFGA signs will be posted directing everyone to the meeting site. The parking area will be signed as well. I would ask that you please bring chairs if possible to this meeting. I will have a few but not enough. There will be tables provided and electrical extension cords as well for food and beverage maintenance.

We are looking forward to seeing you all there! Any questions please email Bill Deeter at: [billand-saradeeter@embarqmail.com](mailto:billand-saradeeter@embarqmail.com) or call 574-780-3449.



## Great Links on the Web!

<p><b>Indiana Nut &amp; Fruit Growers</b> http://www.nutgrowers.org/</p>	<p><b>Northern Nut Growers Assoc.</b> http://www.northernnutgrowers.org/</p>	<p><b>University of Missouri Center for Agroforestry</b> www.centerforagroforestry.org</p>
<p><b>Kentucky State University Paw Paw Program</b> http://www.pawpaw.kysu.edu</p>	<p><b>American Chestnut Foundation</b> http://www.acf.org</p>	<p><b>The Walnut Council</b> http://www.walnutcouncil.org</p>
<p><b>Midwest Fruit Explorers</b> http://www.midfex.org</p>	<p><b>Facts for Fancy Fruit Newsletter—Purdue:</b> http://www.hort.purdue.edu/fff/fff.shtml</p>	<p><b>Indiana Division of Forestry</b> http://www.in.gov/dnr/forestry</p>
<p><b>Thousand Cankers</b> http://thousandcankers.com</p>	<p><b>Home Orchard Society</b> http://www.homeorchardsociety.org</p>	



### INFGA Membership Form

2017 DUES (Jan 1 - Dec 31)

**\$10 per Year or \$125 Lifetime**

PLEASE CHECK ALL THAT APPLY

**How Did You Learn About INFGA?**

( ) ( ) ( )

Friend Internet Meeting

**New Member** ( )   
 **Renewal** ( )   
 **Lifetime** ( )   
 **Address Change** ( )

Payment \$ \_\_\_\_\_ ( )   
 \_\_\_\_\_ ( )   
 \_\_\_\_\_   
 \_\_\_\_\_

CASH                      CHECK No.                      DATE                      YEAR

Name: \_\_\_\_\_ \_\_\_\_\_  
*Spouse's Name*

Address: \_\_\_\_\_

City: \_\_\_\_\_ State: \_\_\_\_ Zip: \_\_\_\_\_ County: \_\_\_\_\_

E-mail: < \_\_\_\_\_ >

Phone 1: ( \_\_\_\_\_ ) \_\_\_\_\_ Phone 2: ( \_\_\_\_\_ ) \_\_\_\_\_

\*\*\* **KERNEL DELIVERY OPTIONS: E-Mail ( ) Mail ( )** \*\*\*

Make checks payable to: INFGA

**Mail to: Mr. Jerry Lehman, 7780 Persimmon Street, Terre Haute, IN, 47802**

Your paid membership supports our mission and entitles you to receive the Hoosier Kernel newsletter, published four times a year in advance of our seasonal meetings. Paid members can print one free classified ad in the Hoosier Kernel. All INFGA meetings are free of charge to attend and everyone is welcome. Meetings feature a pot-luck lunch, educational talks, tours, or demonstrations. Live auctions of nut and fruit plant material, seeds and starts, tools, specialty items, and much more are a popular feature that help fund INFGA's meetings and educational programs.